

HIGHLIGHTS OF PRESCRIBING INFORMATION

These highlights do not include all the information needed to use KIMMTRAK® safely and effectively. See full prescribing information for KIMMTRAK®

KIMMTRAK® (tebentafusp-tebn) injection, for intravenous use
Initial U.S. Approval: 2022

WARNING: CYTOKINE RELEASE SYNDROME

Cytokine Release Syndrome (CRS), which may be serious or life-threatening, occurred in patients receiving KIMMTRAK. Monitor for at least 16 hours following first three infusions and then as clinically indicated (2.2, 5.1).

INDICATIONS AND USAGE

KIMMTRAK is a bispecific gp100 peptide-HLA-directed CD3 T cell engager indicated for the treatment of HLA-A*02:01-positive adult patients with unresectable or metastatic uveal melanoma (1, 2.1).

DOSAGE AND ADMINISTRATION

- Recommended dosage: 20 mcg intravenously on Day 1, 30 mcg intravenously on Day 8, 68 mcg intravenously on Day 15, and 68 mcg intravenously once every week thereafter (2.2).
- Dilute and administer by intravenous infusion over 15-20 minutes (2.2, 2.4).
- See Full Prescribing Information for instructions on preparation and administration of the diluted solution for intravenous infusion (2.2, 2.4).
- Dosage interruption or permanent discontinuation may be required based on individual safety and tolerability (2.3).

DOSAGE FORMS AND STRENGTHS

Injection: 100 mcg/0.5 mL solution in a single-dose vial (3).

CONTRAINDICATIONS

None (4).

WARNINGS AND PRECAUTIONS

- Skin reactions:** Rash, pruritus, and cutaneous edema occurred in patients treated with KIMMTRAK. If skin reactions occur, treat based on persistence and severity of symptoms (2.3, 5.2).
- Elevated liver enzymes:** Elevations in liver enzymes occurred in patients treated with KIMMTRAK. Monitor ALT, AST, and total bilirubin (2.3, 5.3).
- Embryo-Fetal toxicity:** May cause fetal harm. Advise patients of reproductive potential of the potential risk to the fetus and to use effective contraception (5.4, 8.1, 8.3).

ADVERSE REACTIONS

The most common adverse reactions (occurring in $\geq 30\%$) are cytokine release syndrome, rash, pyrexia, pruritus, fatigue, nausea, chills, abdominal pain, edema, hypotension, dry skin, headache and vomiting (6.1). The most common laboratory abnormalities (occurring in $\geq 50\%$) are decreased lymphocyte count, increased creatinine, increased glucose, increased aspartate aminotransferase, increased alanine aminotransferase, decreased hemoglobin, and decreased phosphate (6.1).

To report SUSPECTED ADVERSE REACTIONS, contact Immunocore at 1-844-IMMUNO1 (1-844-466-8661) or FDA at 1-800-FDA-1088 or www.fda.gov/medwatch.

See 17 for PATIENT COUNSELING INFORMATION and FDA-approved patient labeling.

Revised: 06/2024

FULL PRESCRIBING INFORMATION: CONTENTS*

BOXED WARNING: CYTOKINE RELEASE SYNDROME

1 INDICATIONS AND USAGE

2 DOSAGE AND ADMINISTRATION

2.1 Patient Selection

2.2 Recommended Dosage

2.3 Dosage Modifications for Adverse Reactions

2.4 Preparation and Administration

3 DOSAGE FORMS AND STRENGTHS

4 CONTRAINDICATIONS

5 WARNINGS AND PRECAUTIONS

5.1 Cytokine Release Syndrome

5.2 Skin Reactions

5.3 Elevated Liver Enzymes

5.4 Embryo-Fetal Toxicity

6 ADVERSE REACTIONS

6.1 Clinical Trials Experience

8 USE IN SPECIFIC POPULATIONS

8.1 Pregnancy

8.2 Lactation

8.3 Females and Males of Reproductive Potential

8.4 Pediatric Use

8.5 Geriatric Use

11 DESCRIPTION

12 CLINICAL PHARMACOLOGY

12.1 Mechanism of Action

12.2 Pharmacodynamics

12.3 Pharmacokinetics

12.6 Immunogenicity

13 NONCLINICAL TOXICOLOGY

13.1 Carcinogenesis, Mutagenesis, Impairment of Fertility

14 CLINICAL STUDIES

16 HOW SUPPLIED/STORAGE AND HANDLING

17 PATIENT COUNSELING INFORMATION

*Sections or subsections omitted from the full prescribing information are not listed.

FULL PRESCRIBING INFORMATION

WARNING: CYTOKINE RELEASE SYNDROME

Cytokine Release Syndrome (CRS), which may be serious or life-threatening, occurred in patients receiving KIMMTRAK. Monitor for at least 16 hours following first three infusions and then as clinically indicated [*see Dosage and Administration (2.2), see Warnings and Precautions (5.1)*].

1 INDICATIONS AND USAGE

KIMMTRAK is indicated for the treatment of HLA-A*02:01-positive adult patients with unresectable or metastatic uveal melanoma.

2 DOSAGE AND ADMINISTRATION

2.1 Patient Selection

Select patients for treatment of unresectable or metastatic uveal melanoma with KIMMTRAK based on a positive HLA-A*02:01 genotyping test of a whole blood sample [*see Clinical Studies (14)*]. Information on FDA-approved tests is available at <http://www.fda.gov/companiondiagnostics>.

2.2 Recommended Dosage

The recommended dosage of KIMMTRAK administered intravenously is:

- 20 mcg on Day 1
- 30 mcg on Day 8
- 68 mcg on Day 15
- 68 mcg once every week thereafter

Treat patients until unacceptable toxicity or disease progression occur.

Administer the first three infusions of KIMMTRAK in an appropriate healthcare setting by intravenous infusion over 15-20 minutes. Monitor patients during the infusion and for at least 16 hours after the infusion is complete.

If the patient does not experience Grade 2 or worse hypotension (requiring medical intervention) during or after the third infusion, administer subsequent doses in an appropriate ambulatory care setting, and monitor patients for a minimum of 30 minutes following each of these infusions [*see Warnings and Precautions (5.1)*].

2.3 Dosage Modifications for Adverse Reactions

No dosage reduction for KIMMTRAK is recommended. Dosage modifications for KIMMTRAK for adverse reactions are summarized in Table 1.

Table 1: Dose Modifications for Adverse Reactions

Adverse Reaction	Severity	KIMMTRAK Dosage Modifications
<p>Cytokine Release Syndrome (CRS) <i>[see Warnings and Precautions (5.1)]</i></p>	<p>Moderate defined as temperature $\geq 38^{\circ}\text{C}$ with</p> <ul style="list-style-type: none"> • Hypotension that responds to fluids (does not require vasopressors) or • Hypoxia requiring low flow nasal canula (≤ 6 L/min) or blow-by oxygen 	<ul style="list-style-type: none"> • If hypotension and hypoxia do not improve within 3 hours or CRS worsens, escalate care and manage according to next higher level of severity • For moderate CRS that is persistent (lasting 2-3 hours) or recurrent, administer corticosteroid premedication (e.g. dexamethasone 4 mg or equivalent) at least 30 minutes prior to next dose
	<p>Severe defined as temperature $\geq 38^{\circ}\text{C}$ with</p> <ul style="list-style-type: none"> • Hemodynamic instability requiring a vasopressor (with or without vasopressin) or • Worsening hypoxia or respiratory distress requiring high flow nasal canula (> 6 L/min oxygen) or face mask 	<ul style="list-style-type: none"> • Withhold KIMMTRAK until CRS and sequelae have resolved • Administer intravenous corticosteroid (e.g., 2 mg/kg/day methylprednisolone or equivalent) • Resume KIMMTRAK at same dose level (i.e., do not escalate if severe CRS occurred during initial dose escalation; resume escalation once dosage is tolerated) • For severe CRS, administer corticosteroid premedication (e.g. dexamethasone 4 mg or equivalent) at least 30 minutes prior to next dose
	<p>Life threatening defined as temperature $\geq 38^{\circ}\text{C}$ with</p> <ul style="list-style-type: none"> • Hemodynamic instability requiring multiple vasopressors (excluding vasopressin) • Worsening hypoxia or respiratory distress despite oxygen administration requiring positive pressure 	<ul style="list-style-type: none"> • Permanently discontinue KIMMTRAK • Administer intravenous corticosteroid (e.g., 2 mg/kg/day methylprednisolone or equivalent)
<p>Skin Reactions <i>[see Warnings and Precautions (5.2)]</i></p>	<p>Grade 2 or 3^a</p>	<ul style="list-style-type: none"> • Withhold KIMMTRAK until \leq Grade 1 or baseline • Resume KIMMTRAK at same dose level (i.e., do not escalate if Grade 3 skin reactions occurred during initial dose

		<p>escalation; resume escalation once dosage is tolerated)</p> <ul style="list-style-type: none"> For persistent reactions not responding to oral steroids, consider intravenous corticosteroid (e.g., 2 mg/kg/day methylprednisolone or equivalent)
	Grade 4 ^a	<ul style="list-style-type: none"> Permanently discontinue KIMMTRAK Administer intravenous corticosteroid (e.g., 2 mg/kg/day methylprednisolone or equivalent)
<p>Elevated Liver Enzymes</p> <p><i>[see Warnings and Precautions (5.3)]</i></p>	Grade 3 or 4 ^a	<ul style="list-style-type: none"> Withhold KIMMTRAK until \leq Grade 1 or baseline. Resume KIMMTRAK at same dose level if the elevated liver enzymes occur in the setting of Grade 3 CRS; resume escalation if next administration is tolerated. If the elevated liver enzymes occur outside the setting of Grade 3 CRS <ul style="list-style-type: none"> resume escalation if the current dose is less than 68 mcg, or resume at same dose level if dose escalation has completed Administer intravenous corticosteroids if no improvement within 24 hours
<p>Other Adverse Reactions</p> <p><i>[see Adverse Reactions (6.1)]</i></p>	Grade 3 ^a	<ul style="list-style-type: none"> Withhold KIMMTRAK until \leq Grade 1 or baseline Resume KIMMTRAK at same dose level (i.e., do not escalate if other Grade 3 adverse reaction occurred during initial dose escalation; resume escalation once dosage is tolerated)
	Grade 4 ^a	<ul style="list-style-type: none"> Permanently discontinue KIMMTRAK

^a Based on National Cancer Institute Common Terminology Criteria for Adverse Events (CTCAE) version 4.03 (NCI CTCAEv4.03).

2.4 Preparation and Administration

Preparation

- A 2-step dilution process is required for preparation of the final KIMMTRAK dose for infusion.
- Use aseptic technique for dilution and preparation of intravenous infusion solutions.
- Visually inspect parenteral drug products and infusion bags for particulate matter and discoloration prior to administration, whenever solution and container permit.

Step 1: Preparation of the Infusion Bag

To prevent adsorption of tebentafusp-tebn to the infusion bag and other components of the drug delivery system, prepare an Albumin (Human) in 0.9% Sodium Chloride Injection, USP solution as follows:

- Using a 1 mL syringe with graduations of 2 decimal places and a sterile needle, withdraw the calculated volume of Albumin (Human) into the syringe (see Table 2 below) and add to the 100 mL 0.9% Sodium Chloride Injection, USP bag constructed of polyolefins (PO) [such as polyethylene (PE) and polypropylene (PP)] or polyvinyl chloride (PVC) to make a final Albumin (Human) concentration of 250 mcg/mL.

Table 2: Examples of Albumin (Human) Concentration and Volumes

Albumin (Human) concentration*	Albumin (Human) volume for addition to a 100 mL 0.9% Sodium Chloride Injection, USP Infusion Bag to prepare a concentration of 250 mcg/mL Albumin (Human) in 0.9% Sodium Chloride Injection, USP
5% (50 g/L)	0.5 mL
20% (200 g/L)	0.13 mL
25% (250 g/L)	0.1 mL

*Albumin (Human); use concentration as per local availability. Examples include but are not restricted to the following strengths: 5%, 20%, or 25%.

- Gently homogenize the prepared solution by completing the following steps:
 - Invert the infusion bag so that the bag is upside down with the entry port positioned on top. Then tap the side of the port tubing to ensure that any residual solution is released into the bulk solution.
 - Mix the prepared solution by gently rotating the bag lengthwise 360 degrees from the inverted position at least 5 times. Do not shake the infusion bag.
 - Repeat (i) and (ii) an additional three times.

Step 2- Preparation of KIMMTRAK Solution for Infusion

- Do not shake the KIMMTRAK vial.
- Using a 1 mL syringe with graduations of 2 decimal places and a sterile needle, withdraw the required volume of KIMMTRAK 100 mcg/ 0.5 mL as per the dose required (shown in Table 3 below) and add to the prepared 100 mL infusion bag containing 0.9% Sodium Chloride Injection, USP plus Albumin (Human).
- Discard the single-dose vial containing the unused portion of KIMMTRAK in accordance with local requirements. Do not prepare more than one dose from the vial.

Table 3: KIMMTRAK Volumes Required for Addition to the Infusion Bag

Day of treatment	Dose (mcg) of KIMMTRAK	Volume (mL) of KIMMTRAK
Day 1	20	0.1
Day 8	30	0.15
Day 15 and weekly thereafter	68	0.34

- d. Mix the infusion bag by following the same procedure outlined in Step 1b.

Administration

- Immediately administer the diluted solution via intravenous infusion over 15-20 minutes through a dedicated intravenous line. A sterile, non-pyrogenic, low protein binding 0.2 micron in-line filter infusion set should be used. Administer the entire contents of the KIMMTRAK infusion bag.
- Administer the prepared infusion bag within 4 hours from the time of preparation including the duration of infusion. During the 4-hour window, the KIMMTRAK infusion bag should remain at room temperature.
- If not used immediately, store the KIMMTRAK infusion bag in a refrigerator at 2°C to 8°C (36°F to 46°F) and infuse within 24 hours from the time of preparation, which includes the storage time in the refrigerator, the time allowed for equilibration of the infusion bag to room temperature, and the duration of the infusion.
- Once removed from the refrigerator, do not refrigerate KIMMTRAK infusion bag again. Do not freeze. Discard unused KIMMTRAK solution beyond the recommended storage time.
- Do not mix KIMMTRAK with other drugs or administer other drugs through the same intravenous line.
- Upon completion of KIMMTRAK infusion, flush the infusion line with adequate volume of sterile 0.9% Sodium Chloride Injection, USP to ensure that the entire contents of the infusion bag are administered.

3 DOSAGE FORMS AND STRENGTHS

Injection: 100 mcg/0.5 mL clear, colorless to slightly yellowish solution in a single-dose vial

4 CONTRAINDICATIONS

None.

5 WARNINGS AND PRECAUTIONS

5.1 Cytokine Release Syndrome

Cytokine release syndrome (CRS), which may be life threatening, occurred in patients receiving KIMMTRAK. Manifestations of CRS may include fever, hypotension, hypoxia, chills, nausea, vomiting,

rash, elevated transaminases, fatigue, and headache. CRS (\geq Grade 2) occurred in 77% of patients in Study IMCgp100-202 who received KIMMTRAK [see *Adverse Reactions (6.1)*]. Among patients who received KIMMTRAK, 23% received systemic corticosteroids for at least 1 infusion, 8% received supplemental oxygen during at least 1 infusion, and 0.8% received a vasopressor for at least 1 infusion. CRS led to permanent discontinuation in 1.2% of patients.

In Study IMCgp100-202, 60% of patients experienced \geq Grade 2 CRS with more than 1 infusion, with the median number of events being 2 (range 1 - 12). The majority (84%) of episodes of CRS started the day of infusion. Among cases that resolved, the median time to resolution of CRS was 2 days.

Ensure that healthcare providers administering KIMMTRAK have immediate access to medications and resuscitative equipment to manage CRS. Ensure patients are euvolemic prior to initiating the infusions. Closely monitor patients for signs or symptoms of CRS following infusions of KIMMTRAK [see *Dosage and Administration (2.2)*].

Monitor fluid status, vital signs, and oxygenation level and provide appropriate therapy. Withhold or discontinue KIMMTRAK depending on persistence and severity of CRS [see *Dosage and Administration (2.3)*].

5.2 Skin Reactions

Skin reactions, including rash, pruritus, and cutaneous edema occurred in patients treated with KIMMTRAK. In study IMCgp100-202, skin reactions occurred in 91% of patients treated with KIMMTRAK, including Grade 2 (44%) and Grade 3 (21%) events. Skin reactions included rash (83%), pruritus (69%), erythema (25%), and cutaneous edema (27%) [see *Adverse Reactions (6.1)*].

The median time to onset of skin reactions was 1 day (range: 1 – 55 days). The median time to improvement to \leq Grade 1 was approximately 6 days.

Monitor patients for skin reactions. If skin reactions occur, treat with antihistamine and topical or systemic steroids based on persistence and severity of symptoms. Withhold or permanently discontinue KIMMTRAK depending on the severity of skin reactions [see *Dosage and Administration (2.3)*].

5.3 Elevated Liver Enzymes

In Study IMCgp100-202, increases in alanine aminotransferase or aspartate aminotransferase were observed in 65% of patients treated with KIMMTRAK.

In patients experiencing ALT/AST elevations, 73% initially occurred within the first 3 infusions with KIMMTRAK. Most patients experiencing Grade 3 or 4 ALT/AST elevations had improvement to \leq Grade 1 within 7 days. For events that were observed outside the setting of CRS, the median time to onset was 129 days. Grade 3 or greater elevations in liver enzymes outside the setting of CRS occurred in approximately 8% of patients.

Elevations in liver enzymes led to permanent discontinuation in 0.4% of patients receiving KIMMTRAK.

Monitor alanine aminotransferase (ALT), aspartate aminotransferase (AST), and total blood bilirubin prior to the start of and during treatment with KIMMTRAK. Withhold KIMMTRAK according to severity [see *Dosage and Administration (2.3)*].

5.4 Embryo-Fetal Toxicity

Based on the mechanism of action, KIMMTRAK may cause fetal harm when administered to a pregnant woman. Advise pregnant women of the potential risk to the fetus. Advise females of reproductive

potential to use effective contraception during treatment with KIMMTRAK and for 1 week after the last dose [see *Use in Specific Populations (8.1, 8.3)*].

6 ADVERSE REACTIONS

The following serious adverse reactions are discussed in greater detail in other sections of the label:

- Cytokine Release Syndrome [see *Boxed Warning, Warnings and Precautions (5.1)*]
- Skin Reactions [see *Warnings and Precautions (5.2)*]
- Elevated Liver Enzymes [see *Warnings and Precautions (5.3)*]

6.1 Clinical Trials Experience

Because clinical trials are conducted under widely varying conditions, adverse reaction rates observed in the clinical trials of a drug cannot be directly compared to rates in the clinical trials of another drug and may not reflect the rates observed in practice.

First line metastatic uveal melanoma

The safety of KIMMTRAK was evaluated in study IMCgp100-202, a randomized (2:1), open-label, active-controlled trial in patients who had not received prior systemic therapy for metastatic or advanced uveal melanoma [see *Clinical Studies (14)*]. Patients received either KIMMTRAK administered at 20 mcg intravenously on Day 1, 30 mcg intravenously on Day 8, 68 mcg intravenously on Day 15, and 68 mcg intravenously once every week thereafter (N=245) or investigator's choice treatment (N=111). The median duration of exposure was 5.3 months (range: 0.3 to 33 months) in patients treated with KIMMTRAK.

Serious adverse reactions occurred in 28% of patients who received KIMMTRAK. Serious adverse reactions occurring in $\geq 2\%$ of patients were cytokine release syndrome (10%), rashes (4.5%), pyrexia (2.4%), and hypotension (2%). One patient (0.4%) experienced a fatal adverse reaction (pulmonary embolism).

Adverse reactions led to permanent discontinuation in 3.3% of patients who received KIMMTRAK. Adverse reactions that led to permanent discontinuation of KIMMTRAK were anaphylactic reaction, brain edema, cytokine release syndrome, fatigue, hepatotoxicity, hypotension, and nausea (each 0.4%).

Adverse reactions resulting in dosage interruption occurred in 25% of patients who received KIMMTRAK. Adverse reactions which required dosage interruption in $\geq 2\%$ of patients included fatigue (3.7%), lipase increased (2.9%), pyrexia (2.4%), alanine aminotransferase increase (2%), and aspartate aminotransferase increase (2%).

Adverse reactions leading to dose reduction occurred in 5% of patients who received KIMMTRAK. Adverse reactions which required dosage reduction in $\geq 2\%$ of patients were cytokine release syndrome (2.4%), and rashes (2%).

The most common adverse reactions ($\geq 30\%$) in patients who received KIMMTRAK were cytokine release syndrome, rash, pyrexia, pruritus, fatigue, nausea, chills, abdominal pain, edema, hypotension, dry skin, headache, and vomiting. The most common ($\geq 50\%$) laboratory abnormalities in patient who received KIMMTRAK were decreased lymphocyte count, increased creatinine, increased glucose, increased AST, increased ALT, decreased hemoglobin, and decreased phosphate.

Table 4 summarizes the adverse reactions observed in study IMCgp100-202.

Table 4: Adverse Reactions (≥20%) in Patients with Metastatic Uveal Melanoma Who Received KIMMTRAK in Study IMCgp100-202

Adverse Reactions	KIMMTRAK (N=245)		Investigator's Choice (pembrolizumab, or ipilimumab, or dacarbazine) (N=111)	
	All Grades (%)	Grade 3 or 4 (%)	All Grades (%)	Grade 3 or 4 (%)
Immune system disorders				
Cytokine release syndrome ^a	89	0.8	2.7	0
Skin and subcutaneous tissue disorders				
Rash ^b	83	18	28	0
Pruritus	69	4.5	23	0
Dry skin	31	0	3.6	0
Skin Hypopigmentation ^b	28	NA	5	NA
Erythema	24	0	0.9	0
Hair color changes ^b	20	NA	0	NA
General disorders and administration site conditions				
Pyrexia	76	3.7	7	0.9
Fatigue ^b	64	6	42	0.9
Chills	48	0.4	3.6	0
Edema ^b	45	0	10	0
Gastrointestinal disorders				
Nausea	49	2	26	0.9
Abdominal pain ^b	45	2.9	33	3.6
Vomiting	30	1.2	9	0
Diarrhea	25	1.2	20	2.7
Vascular disorders				

Hypotension	39	3.3	2.7	0
Nervous system disorders				
Headache	31	0.4	10	0.9
Musculoskeletal and connective tissue disorders				
Arthralgia	22	0.8	16	0

^a Represents algorithmic identification of CRS cases based on ASTCT grading criteria (Lee et al. 2019).

^b Represents a composite of multiple related terms.

Clinically relevant adverse reactions occurring in < 20% of patients who received KIMMTRAK included back pain, decreased appetite, constipation, hypertension, tachycardia or sinus tachycardia, dyspnea, paresthesia, dizziness, flushing, muscle spasms, myalgia, pain in extremity, alopecia, skin hyperpigmentation, influenza-like illness, oropharyngeal pain and night sweats.

Table 5 summarizes the selected laboratory abnormalities observed in study IMCgp100-202.

Table 5: Selected Laboratory Abnormalities ($\geq 10\%$) worsening from baseline in patients who received KIMMTRAK versus Investigator's Choice

	KIMMTRAK^a (N = 245)		Investigator's Choice^a (pembrolizumab, or ipilimumab, or dacarbazine) (N = 111)	
	Grades 1-4 %	Grades 3-4 %	Grades 1-4 %	Grades 3-4 %
HEMATOLOGY				
Lymphocyte count decreased	91	56	26	1.8
Hemoglobin decreased	51	0.8	20	0.9
Platelet count decreased	16	0	15	0.9
Neutrophil count decreased	14	2	8	1.8
CHEMISTRY				
Creatinine increased	87	0.4	73	0
Glucose increased	66	3.3	39	4.6
AST increased	55	13	39	1.9
ALT increased	52	9	29	1.8

	KIMMTRAK ^a (N = 245)		Investigator's Choice ^a (pembrolizumab, or ipilimumab, or dacarbazine) (N = 111)	
	Grades 1-4 %	Grades 3-4 %	Grades 1-4 %	Grades 3-4 %
Phosphate decreased	51	11	20	2
Albumin decreased	47	2.1	14	0.9
Calcium decreased	45	1.6	15	1.9
Lipase increased	37	15	28	6
Magnesium decreased	34	0	8	0
Alk phos increased	34	2.9	36	1.8
Sodium decreased	30	2.9	15	0.9
Potassium increased	29	1.6	15	0.9
Bilirubin increased	27	4.1	14	7
Amylase increased	23	4.1	18	1
Glucose decreased	18	0.4	4.6	0
Potassium decreased	17	0.8	8	0.9
Calcium increased	13	0	3.7	0

Alk Phos = Alkaline Phosphatase; AST=aspartate aminotransferase; ALT=alanine aminotransferase

^a The denominator used to calculate the rate varied from 242 to 245 for KIMMTRAK and 105 to 109 for IC based on the number of patients with a baseline value and at least one post-treatment value for the laboratory assessment.

8 USE IN SPECIFIC POPULATIONS

8.1 Pregnancy

Risk Summary

Based on the mechanism of action, KIMMTRAK may cause fetal harm when administered to a pregnant woman [see *Clinical Pharmacology (12.1)*]. There are no available data with KIMMTRAK in pregnant woman. No animal reproductive and developmental toxicity studies have been conducted with

KIMMTRAK. Molecules of similar molecular weight can cross the placenta resulting in fetal exposure. Advise women of the potential risk to the fetus.

In the U.S. general population, the estimated background risk of major birth defects and miscarriage in clinically recognized pregnancies is 2%-4% and 15%-20%, respectively.

8.2 Lactation

Risk Summary

There are no data on the presence of tebentafusp-tebn in human milk, the effect on the breastfed child, or the effects on milk production. Because tebentafusp-tebn may be excreted in human milk and because of the potential for serious adverse reactions in a breastfed child, advise patients not to breastfeed during treatment with KIMMTRAK and for at least 1 week after the last dose.

8.3 Females and Males of Reproductive Potential

KIMMTRAK may cause fetal harm when administered to a pregnant woman [*see Use in Specific Populations (8.1)*].

Pregnancy Testing

Verify pregnancy status in females of reproductive potential prior to initiating KIMMTRAK treatment.

Contraception

Females

Advise female of reproductive potential to use effective contraception during treatment and for 1 week following the last dose of KIMMTRAK [*see Use in Specific Populations (8.1)*].

8.4 Pediatric Use

Safety and efficacy of KIMMTRAK have not been established in pediatric patients.

8.5 Geriatric Use

Of the 245 patients with metastatic uveal melanoma treated with KIMMTRAK on IMCgp100-202, 47% were 65 years of age and older and 9% were 75 years of age and older. No overall differences in safety or efficacy were observed between patients \geq 65 years of age compared to younger adult patients.

11 DESCRIPTION

Tebentafusp-tebn is a bispecific gp100 peptide-HLA-directed T cell receptor CD3 T cell engager. Tebentafusp-tebn has an approximate molecular weight of 77 kDa. Tebentafusp-tebn is produced by recombinant DNA technology in *Escherichia coli* cells.

KIMMTRAK (tebentafusp-tebn) injection is supplied in a single-dose vial as a sterile, preservative-free, clear, colorless or slightly yellowish solution for intravenous administration by infusion.

Each single-dose vial contains tebentafusp-tebn (100 mcg), citric acid monohydrate (0.95 mg), di-sodium hydrogen phosphate (2.91 mg), mannitol (5 mg), polysorbate 20 (0.1 mg) trehalose (25 mg), and water for injection, with a pH of 6.5.

12 CLINICAL PHARMACOLOGY

12.1 Mechanism of Action

Tebentafusp-tebn is a bispecific gp100 peptide-HLA-A*02:01 directed T cell receptor CD3 T cell engager. The TCR arm binds to a gp100 peptide presented by human leukocyte antigen-A*02:01 (HLA-A*02:01) on the cell surface of uveal melanoma tumor cells.

In vitro, tebentafusp-tebn bound to HLA-A*02:01-positive uveal melanoma cells and activated polyclonal T cells to release inflammatory cytokines and cytolytic proteins, which results in direct lysis of uveal melanoma tumor cells.

12.2 Pharmacodynamics

Lymphocyte counts declined the day after the first 3 doses and returned to baseline prior to subsequent doses.

Serum levels of cytokines (IFN- γ , TNF α , IL-2, IL-6, IL-10 and IL-1RA) and chemokines (CXCL9, CXCL10, CXCL11, hepatocyte growth factor, and monocyte chemoattractant protein-1) were increased during the first three doses of KIMMTRAK with peak levels between 8 to 24 hours after treatment with KIMMTRAK and levels returned to baseline prior to subsequent doses. In subsequent treatment cycles, cytokine elevation occurred in fewer patients with lesser intensity compared to the first 3 doses.

The exposure-response relationship and time course of pharmacodynamic response for the safety and effectiveness of KIMMTRAK have not been fully characterized.

12.3 Pharmacokinetics

After a single dose administration, tebentafusp-tebn C_{max} and AUC_{0-7d} increased in an approximately dose proportional manner from 20 to 68 mcg (0.3 to 1 times the approved recommended dose). Following administration of the approved recommended dosage in patients with metastatic uveal melanoma, the steady-state geometric mean (% CV) C_{max} of tebentafusp-tebn is 13 ng/mL (34.6%) and AUC_{0-7d} is 4.6 ng.day/mL (23%) with no accumulation.

Distribution

Tebentafusp-tebn geometric mean (%CV) steady-state volume of distribution is 7.56 L (24%).

Elimination

The geometric mean clearance of tebentafusp-tebn is 16.4 L/d (CV: 24.5%) and median terminal half-life is 7.5 hours (range: 6.8-7.5 hours).

Metabolism

Tebentafusp-tebn is expected to be catabolized into small peptides and amino acids.

Specific Populations

No clinically significant difference in the pharmacokinetics of tebentafusp-tebn were identified based on weight (43 to 163 kg), sex (48% female), age (23 to 91 years), or mild to moderate renal impairment based on creatinine clearance (CL_{cr}) estimated by C-G formula (CL_{cr} 30 to 89 mL/min) or mild hepatic impairment as measured by total bilirubin (TB) and aspartate aminotransferase (AST) (TB \leq upper limit of normal (ULN) and AST > ULN or TB > 1 to 1.5x ULN and any AST).

Tebentafusp-tebn has not been studied in patients with severe ($CL_{cr} < 30$ mL/min) renal impairment or in patients with moderate (TB >1.5 to 3x ULN, any AST) to severe (TB > 3 to 10x ULN, any AST) hepatic impairment.

Drug Interaction

Elevation of certain proinflammatory cytokines may suppress CYP450 enzyme activities.

12.6 Immunogenicity

The observed incidence of anti-drug antibodies is highly dependent on the sensitivity and specificity of the assay. Differences in assay methods preclude meaningful comparisons of the incidence of anti-drug antibodies in the studies described below with the incidence of anti-drug antibodies in other products or studies, including those of KIMMTRAK.

In studies IMCgp100-102 and IMCgp100-202, 36% (47/131) and 28% (67/240) of patients who were treated with tebentafusp-tebn at the recommended dosing regimen for up to 29 cycles and 45 cycles, respectively, developed anti-tebentafusp-tebn antibodies (ADA). Among the patients who developed ADAs, neutralizing antibodies (NAb) against tebentafusp-tebn were detected in 57% (27/47) and 63% (42/67), respectively, in studies IMCgp100-102 and IMCgp100-202. The median onset time to ADA formation was 8 and 12 weeks and 15 and 16 weeks for NAb formation after tebentafusp-tebn treatment in studies IMCgp100-102 and IMCgp100-202, respectively.

Tebentafusp-tebn exposure was lower in the presence of ADAs and NAb. In Studies IMCgp100-102 and IMCgp100-202, tebentafusp-tebn treated patients who developed ADAs had tebentafusp-tebn concentrations (C_{max}) that were 50% to 99% lower compared to patients who did not develop ADAs. Tebentafusp-tebn clearance was higher in patients with high titer ADAs (titers > 8192), resulting in a lower exposure ($AUC_{0-7 \text{ days}}$) by 97% compared to patients who did not develop ADA, and terminal half-life decreased to 10-14 minutes. Development of high titer Nabs (titers >100 in Study IMCgp100-102 or >640 in Study IMCgp100-202) resulted in lower C_{max} of tebentafusp-tebn by 85% to 99% compared to patients who did not develop NAb, and the tebentafusp-tebn concentrations (C_{max}) became undetectable in 43.5% (30/69) of patients who developed NAb in both studies.

The effect of ADA and NAb on pharmacodynamics, safety, or effectiveness of tebentafusp-tebn has not been fully characterized.

13 NONCLINICAL TOXICOLOGY

13.1 Carcinogenesis, Mutagenesis, Impairment of Fertility

No carcinogenicity or genotoxicity studies have been conducted with tebentafusp-tebn.

No studies have been conducted to evaluate the effects of tebentafusp-tebn on fertility.

14 CLINICAL STUDIES

Study IMCgp100-202: First line metastatic uveal melanoma

KIMMTRAK was evaluated in IMCgp100-202, a randomized, open-label, multicenter trial (NCT03070392) that enrolled patients with metastatic uveal melanoma (N=378). Patients were required to be HLA-A*02:01 genotype positive identified by a central assay. Patients were excluded if they received prior systemic therapy for metastatic or advanced uveal melanoma or localized liver-directed therapy. Prior surgical resection of oligometastatic disease was permitted. Patients with clinically significant cardiac disease or the presence of symptomatic or untreated brain metastasis were excluded.

Patients were randomized (2:1) to receive KIMMTRAK weekly by intravenous infusion administered at 20 mcg intravenously on Day 1, 30 mcg intravenously on Day 8, 68 mcg intravenously on Day 15, and 68 mcg intravenously once every week thereafter (N=252) or Investigator's choice (N=126) of pembrolizumab, ipilimumab, or dacarbazine. Randomization was stratified by lactate dehydrogenase (LDH) level at study entry. Across both arms, patients stopped treatment for disease progression, unless the patient was otherwise deriving benefit, or for unacceptable toxicity.

The major efficacy outcome was overall survival (OS). Additional efficacy outcomes were investigator-assessed progression free survival (PFS) and objective response rate (ORR) per RECIST 1.1.

The median age was 64 years (range 23 to 92 years); 50% were female; 87% were White, and 12% were unreported or unknown race. The reported ethnicity was Hispanic or Latino in 2.4% of patients. Baseline ECOG performance status was 0 (73%), 1 (21%), or 2 (0.3%); 36% had elevated LDH level; and 94% had liver metastasis.

The efficacy results are summarized in Table 6 and Figure 1.

Table 6: Efficacy Results in Study IMCgp100-202

	KIMMTRAK (N=252)	Investigator's Choice (pembrolizumab, or ipilimumab, or dacarbazine) (N=126)
Overall Survival (OS)¹		
Number of deaths	87 (34.5%)	63 (50%)
Median in months (95% CI)	21.7 (18.6, 28.6)	16 (9.7, 18.4)
HR (95% CI) ²	0.51 (0.37, 0.71)	
p-value ^{3, 4}	<0.0001	
Progression-free Survival⁵		
Number (%) of patients with event	198 (78.6%)	97 (77%)
Median in months (95% CI)	3.3 (3, 5)	2.9 (2.8, 3)
HR (95% CI) ²	0.73 (0.58, 0.94)	
p-value ^{3, 6}	0.0139	
Objective Response Rate (95% CI)⁷	9.1% (5.9, 13.4)	4.8% (1.8, 10.1)
Complete Response	1 (0.4%)	0
Partial Response	22 (8.7%)	6 (4.8%)

CI= Confidence Interval, HR= Hazard Ratio

¹ Based on prespecified interim analysis

² Hazard ratio is from a cox proportional hazards model stratified by LDH status

³ Two-sided p-value based on log rank test stratified by LDH

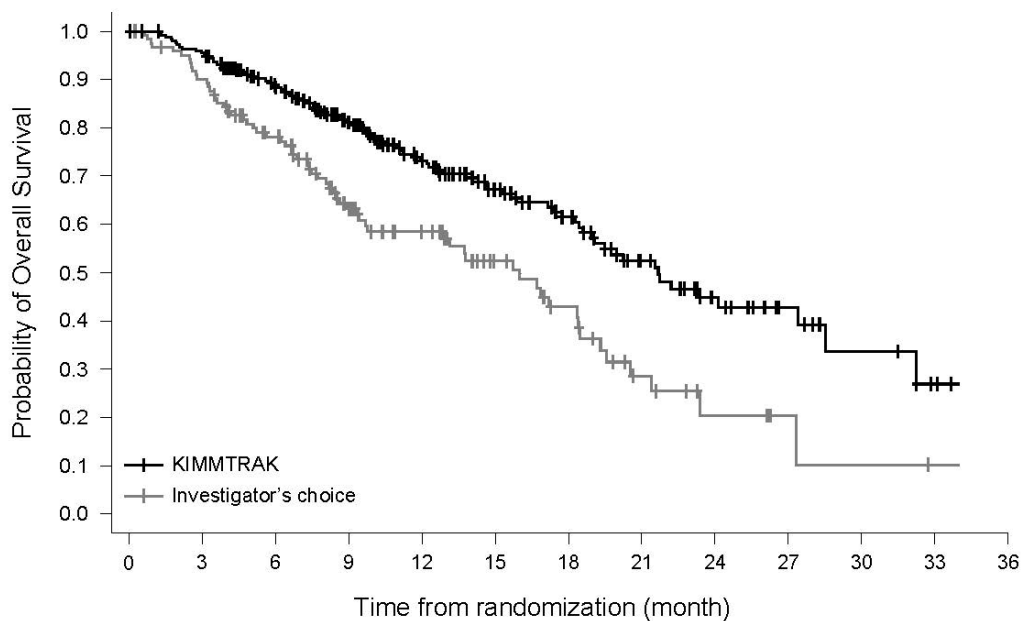
⁴ Compared to the interim efficacy boundary of 0.006

⁵ Final PFS analysis

⁶ Compared to the efficacy boundary of 0.05.

⁷ Not formally tested

Figure 1: Kaplan-Meier Curves of Overall Survival in Study IMCgp100-202



Number of patients at risk

KIMMTRAK	252	242	221	197	167	132	109	90	71	59	44	33	22	17	9	6	5	0
Investigator's choice	126	116	100	86	69	48	43	34	27	20	12	7	4	4	1	1	1	0

16 HOW SUPPLIED/STORAGE AND HANDLING

How Supplied

Each KIMMTRAK (tebentafusp-tebn) injection carton (NDC 80446-401-01) contains:

- One single-dose vial containing 100 mcg of tebentafusp-tebn in 0.5 mL of sterile, preservative-free, clear, colorless or slightly yellowish solution.

The vial stopper is not made with natural rubber latex.

Storage and Handling

- Store KIMMTRAK vials in the original carton refrigerated at 2°C to 8°C (36°F to 46°F) and protect from light until time of use. Do not freeze. Do not shake.

17 PATIENT COUNSELING INFORMATION

Advise the patient to read the FDA-approved patient labeling (Patient Information).

Cytokine Release Syndrome (CRS)

Inform patients of the risk of CRS, and to immediately contact their healthcare provider for signs and symptoms associated with CRS (e.g., pyrexia, hypotension, hypoxia, chills, nausea, vomiting, fatigue, or headache) [see *Warnings and Precautions (5.1)*].

Skin Reactions

Inform patients that rashes and skin reactions have occurred in patients who have received KIMMTRAK. Advise patients to contact their healthcare provider for signs and symptoms of progressive or intolerable skin reactions [see *Warnings and Precautions (5.2)*].

Elevated Liver Enzymes

Inform patients that elevations in liver enzymes have occurred in patients who have received KIMMTRAK. Advise patients to contact their healthcare provider for signs and symptoms of liver toxicity (e.g., right sided abdominal pain, jaundice, scleral icterus) [see *Warnings and Precautions (5.3)*].

Embryo-Fetal Toxicity

- Advise females to inform their healthcare provider if they are pregnant or become pregnant. Inform females of the risk to a fetus [see *Warnings and Precautions (5.4)* and *Use in Specific Populations (8.1)*].
- Advise females of reproductive potential to use effective contraception while on KIMMTRAK and for 1 week after the last dose [see *Use in Specific Populations (8.1)* and *(8.3)*].

Lactation

- Advise patients not to breastfeed during treatment with KIMMTRAK and for 1 week after the last dose [see *Use in Specific Populations (8.2)*].

Manufactured by:

Immunocore Limited
92 Park Drive, Milton Park
Abingdon, Oxfordshire
United Kingdom, OX144RY
License no: 2239

At:

Baxter Oncology GmbH
Kantstraße 2
33790 Halle/Westfalen
Germany

For:

Immunocore Commercial LLC
181 Washington Street,
Conshohocken, PA, US